

# R.L. Bode Endowment Established

The story starts with Pastor Bode's own words: "It was in the summer of 1946 that I drove to Camp Emmaus one afternoon to get some campers who had spent the previous week there, and I took my son Richard and his friend, Don Stueve along to spend the following week at camp. The boys and I were disappointed. There was no room. That day I started to think of all the places in northern Minnesota where I had been which would be suitable for a church camp. Finally, about 2:00 am the next morning I happened to think of that island in East Battle Lake. I had seen it often, fished around it, but had never set foot on it."

God blessed that vision of Pastor Bode when Pastor Bode was able to contact the owner of the island, Mr Hugo Ackerman, who was willing to sell the property for \$15,500.

Pastors from the region gathered together in 1948 and formed the Park Region Camp Association. Pastor Bode was elected to serve as Chairman, with Pastor Karl Ansgorge elected as Secretary. On April 13,

1949 the first payment of \$500 was made to Mr Ackerman to establish a contract for deed.

The camp was first known as the Park Region Youth Camp, but by the early 1950's organizations such as Aid Association for Lutherans, the Lutheran Laymen's League, the LWML and other groups were using the Island as a gathering place for meetings, rallies, conferences, and retreats.

God gave Pastor R.L. Bode a vision of what Lutheran Island Camp might become. It only seems appropriate that a resource that will provide for the Camp's future support be named in recognition of the God's servant, Pastor R.L. Bode.

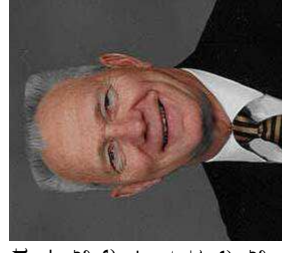


Photo of R.L. Bode enjoyed fishing off of the Island

## Pastor David Bode heads up effort

Lutheran Island Camp Foundation is pleased to announce that retired pastor, The Reverend David Bode will play a key part in the development of the R.L. Bode Endowment.

Pastor Bode, former President of the Minnesota North District, has volunteered his services to act as development director for Lutheran Island Camp. In that capacity Pastor Bode is available to preach and do



Pastor Dave Bode

### Inside this issue:

Million Dollar Goal set	2
Pastor Bode's Legacy	2
How Endowment Works	2
First Gifts Received	3
Life Insurance and Annuities	3
Thrivent Provides Grant	3
A Legacy Gift Keeps on Giving	4

### Special points of interest:

- Goal set at \$1 Million over ten year period
- Funds to be used for general support
- Pledges Welcome
- Deferred gifts to provide bulk of assets
- Contact Pastor Dave Bode or Lutheran Island Camp Foundation for more information and to schedule a visit.

\$1,000,000 Goal  
2006-2016



LUTHERAN ISLAND CAMP FOUNDATION, INC.

# R. L. Bode General Endowment Fund

The Lutheran Island Camp Foundation was established in 2005 to provide a separate corporation that provides fundraising and resource development for the support of the mission of Lutheran Island Camp. A separate board of directors monitors the various endowments and funds provided by donors and assures that the very best in stewardship of God's gifts is provided. For more information about the Foundation, contact us at:

Lutheran Island Camp Foundation

45011 230th St

Henning, MN 56551

**LUTHERAN ISLAND CAMP FOUNDATION, INC.**

Address:  
45011 230th St  
Henning, MN 56551

Phone: 218-583-2905  
Fax: 218-583-2906  
Email: [lic@yahoo.com](mailto:lic@yahoo.com)

**Building Christ centered programs and facilities for you, your children, and your children's children**

**We're on the web at  
[www.islandcamp.org](http://www.islandcamp.org)**

## A Legacy Gift Keeps on Giving

Pastor R.L. Bode left a legacy of caring, compassion, spiritual strength, and a vision of what a piece of land he knew as "Bald Island" could become. That legacy lives on through the work of the staff and volunteers of Lutheran Island Camp as they work with families, children, groups, and others.

Not all of us have the same kind of opportunity to be a

"pioneer" like Pastor Bode. But each of us can leave a legacy for future generations. Some of us will do that through our volunteer efforts at camp or as camp representatives or as people sharing information about the Foundation. Still others will work hard to pay the way for children to come to camp and pray that the Lord will work His miracles in their lives.

And there will be some of us who love the camp and its ministry in such a way that our legacy will take the form of a bequest that will help the camp face the challenges of the future.

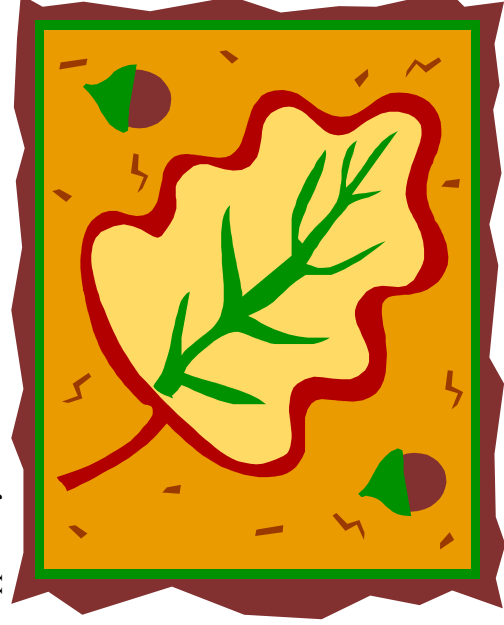
Each generation of camp support-

ers has had a different way to demonstrate support. Those first pastors scrambled to find \$15,500 dollars to buy the Island. In the 1950's the LWML sacrificed much to provide the thousands of dollars for the chapel and dining hall. The Active Christian Teens raised nearly \$30,000 in the 70's to build a safe and sturdy storm shelter. Hundreds of people gave so that the camp could become available on a year round basis.

Pastors throughout the district took on the challenge of paying off nearly \$200,000 in debt in the 90's.

Today we have the opportunity to provide for the future of the camp by building the endowment through current gifts, but most especially through legacy gifts such as bequests, life insurance, charitable annuities, and real estate gifts.

We invite you to share in the future of Lutheran Island Camp and Retreat Center.



Building Christ centered programs for you, your children and your children's children

## One Million Dollar Goal

It sounds like a lot of money. One Million Dollars. And it is. But the R.L. Bode Endowment Fund is not just about money. It is the beginning of something very special that will provide support for the ministry of Lutheran Island Camp for many years to come. When we achieve that goal, it will allow the Lutheran Island Camp Foundation and its donors to provide a minimum of \$100,000 in annual support to the camp.



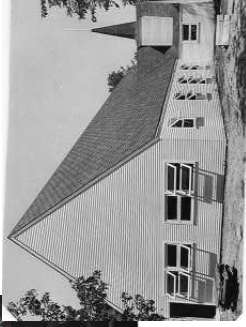
So how do we achieve our goal? It's actually quite simple. We can't alone. It is only through the blessings that God showers down on His people

that this kind of support can happen. And, it seems that God has decided to bless Lutheran Island Camp in a special way. It has been apparent since that very first day when Pastor R.L. Bode decided to track down the owner of the Island around which he had spent many an hour fishing.

God opened the heart of the owner of the Island in such a way that he was willing to sell. And God found a way, using His human servants, to pay for the Island. And God found a way, using farmers and youth and families to build the causeway. And God found a way using the LWML and the ACT, and congregations and individuals to build first the villages, then the chapel, then one building after another. And God continues to use His servants to reach out through new and expanded facilities and programs.



So why in the world should we doubt that He will find a way to accomplish One Million Dollars.



## R.L. Bode Legacy

While many people remember Pastor Bode as the person who first visualized Lutheran Island Camp as a children's camp, his vision was much broader.

"Pastor Bode was on the Board of Directors when I first started working at camp in 1972," remembers Bill Schultz, Camp Director from 1972-1983. "I would often stop by and visit with him at his home in Pillager."

Schultz remembers that Pastor Bode's legacy was not just the camp that he helped to establish, but the concept of Christian Hospitality that Lutheran Island Camp became known for. Bode

and the rest of the board at the Camp's inception understood the spiritual gift of hospitality and how making people feel welcome opened their hearts to the Gospel message that is taught to all ages. It has become a part of Pastor Bode's legacy for camp.

*"Pastor Bode understood Christian Hospitality. I would stop by his home near Pillager and he always welcomed me and shared stories about camp."*

"Christian Hospitality continues to be a key component of the ministry of camp," states current camp director Ken

## How the Endowment Works

What is the difference between the Foundation and an Endowment? A Foundation is an actual organization with a board of directors. Often Foundations are formed to oversee investment and distribution of funds from a source or sources. Some not-for-profits establish Foundations to focus on fund development and investment of funds.

An Endowment Fund can be a part of a Foundation. It generally is established by donors who desire their gifts to be invested and the interest or a specified percentage to be used for a specific purpose.

The R.L. Bode Endowment fund will be a general endow-



*Another generation of youth campers!*

Donors can be assured that their gifts will be handled with care and will be used only for the purpose they designate.

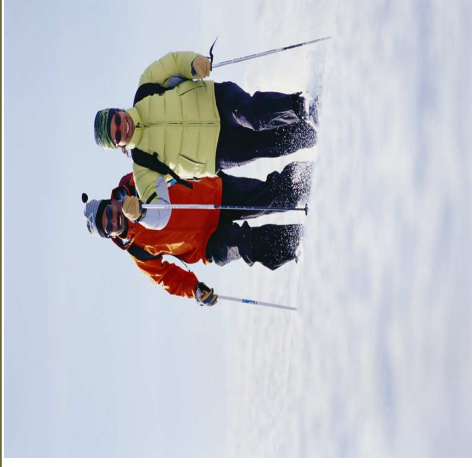
## First Gifts Received

The R.L. Bode Endowment Fund received its first contributions in 2005. Gifts totaling nearly \$8,000 started the endowment fund on its way.

Here are some ideas to help you and your group or congregation participate in the future of Lutheran Island Camp as it will benefit from the General Endowment fund.

First of all, contributions to the Endowment should be above and beyond your regular commitment to camp. But that commitment can serve as a guide for how you may want to structure a bequest. If you normally give \$500 to camp each year, you might want to gift, through your will, \$5,000 or more. That way your gift will continue even after you are no longer able to give.

Second, congregations or groups can



*Gifts will be used to support the year round operations and maintenance needs of camp. Funds are invested in higher yield securities. The interest and increased value provide the dollars used.*

access Thrivent Care in Communities and Care in Congregations funds to help the endowment grow. We will be happy to help.

Third, you can make a multi-year pledge that will allow your gift to have an even greater impact.

Finally, think of the Endowment when you can't come up with a special gift for a birthday, anniversary, or Christmas. Giving in honor of someone is a wonderful way to say that you care about both the person and the ministry of Lutheran Island Camp.

Contact the camp to set up a visit to your congregation, organization, or for a personal visit. Or stop by for a visit—the coffee pot is always on.

## Life Insurance And Annuities

Ava has a life insurance policy with Thrivent financial that is actually owned by Lutheran Island Camp. Each year she sends us a check for the amount of the premium, uses that amount as a tax deduction, then we send the premium payment to Thrivent. In the future, when Ava is called home, the Endowment fund will receive over \$100,000.

Jim has an annuity with American Express. He currently receives about \$10,000 a year from it. Should he die before it matures, the proceeds will come to camp and become a part of the Endowment fund.

Martha's children are grown and on their own. She has loved the

camp since she came out here in 1956 and has contributed whenever she has been able. Martha just designated the Lutheran Island Camp Foundation as the beneficiary of her \$25,000 paid up life insurance policy.

*"I discovered that by using life insurance I was able to give a gift to camp that will be many, many times larger than I could have thought possible."*

Bob is going to borrow \$15,000 from the cash value of his life insurance policy to make a gift to camp. He will deduct the full amount on his taxes and should save nearly \$5,000 this year. He will pay the loan back over 5 years. For more information on how you can use insurance, call us.

## Thrivent provides grant for "Under all that we do".

Lutheran Island Camp, The Lutheran Island Camp Foundation, and the Minnesota North District, have received a \$75,000 grant that will allow us to work with people whom God has blessed in a special way through accumulated wealth in real estate. This grant will allow us to provide information, resources, and educational materials for people who would like to use increased value in farmland, lakeshore property, commercial property, condos, and other property they may own. Such gifts can be a tremendous resource for the Camp and for other ministries.

Often families face significant tax issues from capital gains

and inheritance taxes without proper planning. Those same challenges can become blessings for families and the congregations, the camp, and other charities they would like to support.

More information will be available soon, but if you have appreciated land, lakeshore, or commercial property, you will want to learn more about this special effort.

*"Planting the seeds of our future..."*



*God blesses us in many ways, sometimes it is through increased real estate values.*